



WESTLOCK CULTURAL ARTS THEATRE

TECHNICAL SPECIFICATIONS



Theatre Address

10015 104 Street, Westlock, Alberta, Canada

Contacts

Booking Agent (Only for booking)

Colleen Casavant (780) 349-6654

CCasavant@westlock.ca

Technical Questions

Susan Bowsfield (780) 349-4454

(780) 920-4299

susan.bowsfield@pembinahills.ca

Don Waddle (780) 984-6026

[iamdw.productions@gmail.com](mailto:iamdwanproductions@gmail.com)

Website

<http://www.westlockculturalartstheatre.com>



PHYSICAL SPACE

Seating Capacity

244, raked seating

10 overflow seats on each balcony

Front of House

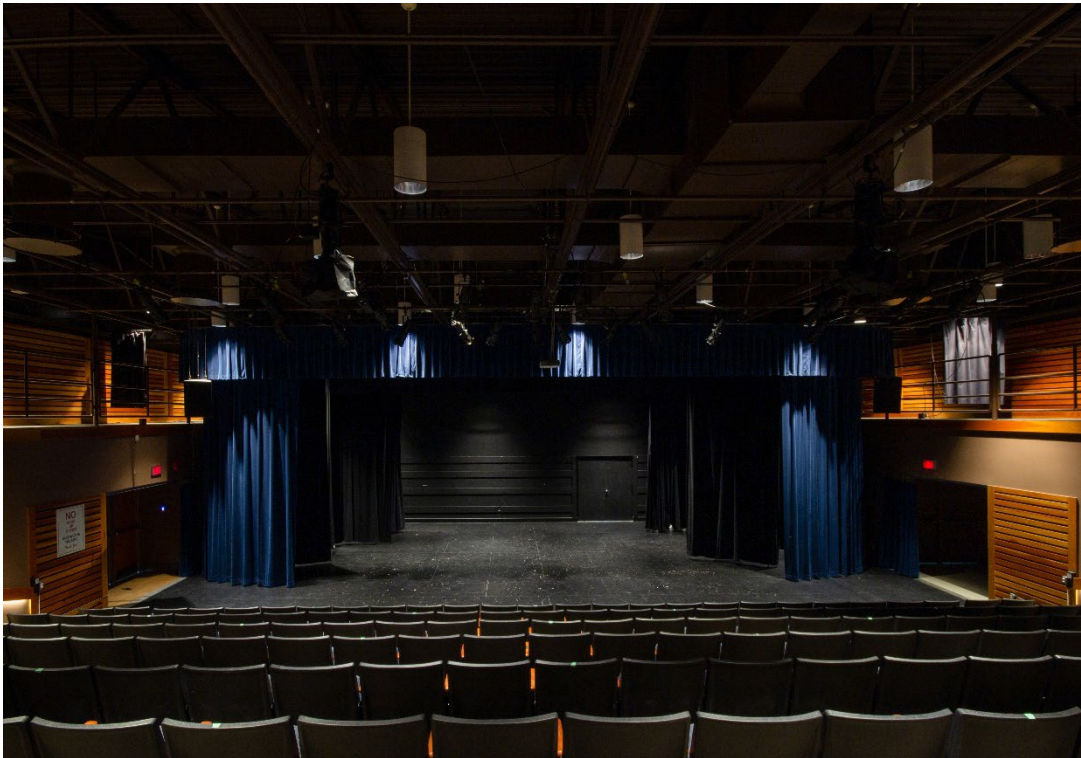
The lobby area accesses the exterior doors

Small, unsecured ticket / merchandise booth available

Foyer and Ticket Booth



PERFORMANCE SPACE



Proscenium Only

Maximum width	50ft	(15.2M)
Proscenium with legs	33ft	(10M)
Upstage wall to seating	33ft	(10M)
Depth upstage traveller to FOH curtain	19ft	(5.8M)
Depth behind upstage traveller	5ft	(1.5M)
Depth cyclorama to FOH curtain	20ft	(6M)
FOH curtain to audience	9ft	(2.7M)
Wing/Traveler height	16ft	(4.8M)
Fixed height to grid	17ft	(5.1M)



Stage floor

The stage floor is black throughout

No traps available

Fly Information

The theatre is not equipped to fly anything

STAGE DRAPES

Valance (Downstage)

Fixed FOH valance: 50ft W x 3ft H (15.2M x 1M)

Blue Velvet

Valance (Midstage)

40ft W x 3ft H (12.2M x 1M)

Main Curtain

50ft W x 16ft H (15.2M x 4.8M)

Blue Velvet

Electrically powered traveller

Operated from control booth or stage left

Maximum speed in/out: 15 seconds

Legs

6ft W x 16ft H (1.8M x 4.8M)

3 pairs

Black in colour

Downstage and upstage pairs of legs are travellers

The midstage pair of legs is fixed

Black Upstage Traveller

42ft W x 16.5ft H (12.8M x 5M)

Pull by hand on stage right



Cyclorama

36ft W x 16ft H (10.9M x 4.8M)

White upstage, behind the upstage traveller

Pulls from left to right

Scrim

The theatre is not equipped with scrim

Storage

Load-in and out that require double doors are on the east side of the school (known as the street doors), into the rear double doors of the theatre

Load-in that does not require double doors is from the main stage doors

Catwalks Stage Right and Left

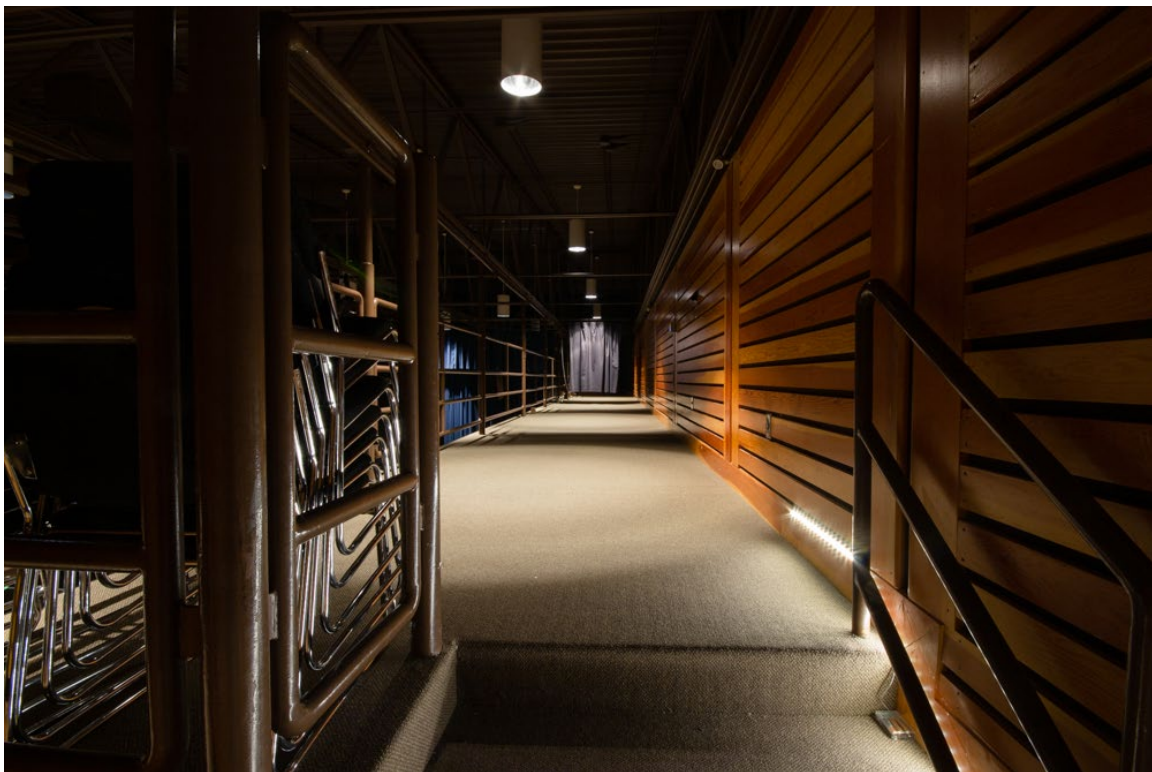




Catwalk Stage Right (Access to backstage)



Catwalk Stage Left (Access to green room)





LIGHTING EQUIPMENT

The following equipment is permanently located and cannot be removed.

Front of House

FOH 1	8	575 Watt ETC 25° - 50° Zoom Source 4 Junior
FOH 2	8	575 Watt ETC 25° - 50° Zoom Source 4 Junior
	2	ETC ColorSource Spot
FOH 3	4	575 Watt ETC 25° - 50° Zoom Source 4 Junior
	2	750 Watt ETC Source 4 w/ Rosco iCue movable mirrors & adjustable iris

On Stage

LX 1	5	ETC ColorSource PAR w/ Narrow Diffuser
	3	575 Watt ETC Source Four 25° - 45° PARnel
	6	500 Watt Strand Lighting 2205 Lekolite 25° - 50° Zoom
LX 2	5	ETC ColorSource PAR w/ Narrow Diffuser
	3	575 Watt ETC Source Four 25° - 45° PARnel
	1	500 Watt F. E. Lighting 750 FOTOSPOT
Cyc LX	4	ETC ColorSource PAR w/ Narrow Diffuser
	5	ETC ColorSource Cyc

Stock Hang

This equipment is semi-permanent but may be relocated.

FOH 1	3	575 Watt ETC 25° - 50° Zoom Source 4 Junior
FOH 2		
FOH 3		
LX 1		
LX2		
LX3		



LIGHTING EQUIPMENT

The following equipment may be located at the licensee's option
Quantities may vary; please confirm before your event

Lekos	3	Strand Century 2209 750 Watt
	2	Strand Century 2204 750 Watt
	1	575 Watt ETC 25° - 50° Zoom Source 4 Junior
Fresnels	2	Strand Century 500 Watt
	2	Altman 500 Watt
Cyc Lighting	2	Altman Single Cell Cyc 1000 Watt
	1	Colortran Three Cell Cyc 1000 Watt
Followspot	1	Strong Trouperette III 1000 Watt
Projector	1	Epson PowerLite 98H (Located beneath FOH 1)



LIGHTING EQUIPMENT

Lighting Console

ETC Element 2 programmable lighting console

Lighting Wash

26 lights set to light 13 areas

- 6 downstage
- 4 center stage
- 3 upstage

Each area has a warm light (R04) and a cool light (R63), which can blend together to create white

Top wash – 14 ETC Colour Source Pars set to top light the stage in complementary areas to the FOH wash. (LED lights that can produce any spectrum of colour)

Specials

Three possible “specials” can be focused anywhere on stage with a choice of colour, gobo, focus, and beam size. These are located in the stock hang.

Two ETC Colour Source Spots are stationary.

Two 750-watt ETC Source 4 fixtures with Rosco iCue mirrors and an adjustable iris that may light the balcony and the stairs to halfway up. Controlled from the lighting console.

Gobo and gel options are limited.

Work lights

7 fresnels, set to light the stage with a blue wash.

House Lights

The house lights can be programmed into the lighting board or managed independently

The house lights are divided into four zones:

- Audience
- On stage
- Front of curtain
- Both back corners

Front of House Control Booth





SOUND SYSTEM AND COMMUNICATIONS

Booth Mix Position

Console		Allen & Heath SQ6 48 Channel, 36 Bus Mixer
Rack		Denon DN-C635 CD Player

Speaker System

L & R	4	QSC KW153
------------------	---	-----------

Onstage Patch Panel

Mix Rack	1	Allen & Heath AR2412 – 24 Input, 12 Output Rack located stage R
-----------------	---	---

Monitors

Console		No monitor console available
----------------	--	------------------------------

Wedges	2	QSC K10
	4	QSC K10.2

Microphones

Wired	6	Shure SM58
	6	Shure SM57
	2	AKG C535 EB
	1	Shure DMK57-52 Drum Mic Kit

Wireless	1	Audio Technica Handheld
	1	Shure Handheld
	1	Sennheiser Handheld
	1	Shure Headset

DI Boxes	2	Rapco db 100
	2	Yorkville YDI-1P
	1	ART dPDB Dual Passive Direct Box



Intercom

4-way, EARTEC wireless headset system

Projections

Projector 1 Epson PowerLite 98H 3LCD Projector w/ HDMI & VGA hookups

Grand Piano

Yamaha C3

Can be tuned upon request for an additional charge

Dance Sound Mixer

Behringer XENYX 1002FX

It can be connected to the sound console to control music from the stage

BACKSTAGE AREAS

Green Room Stage Right

23ft x 17ft

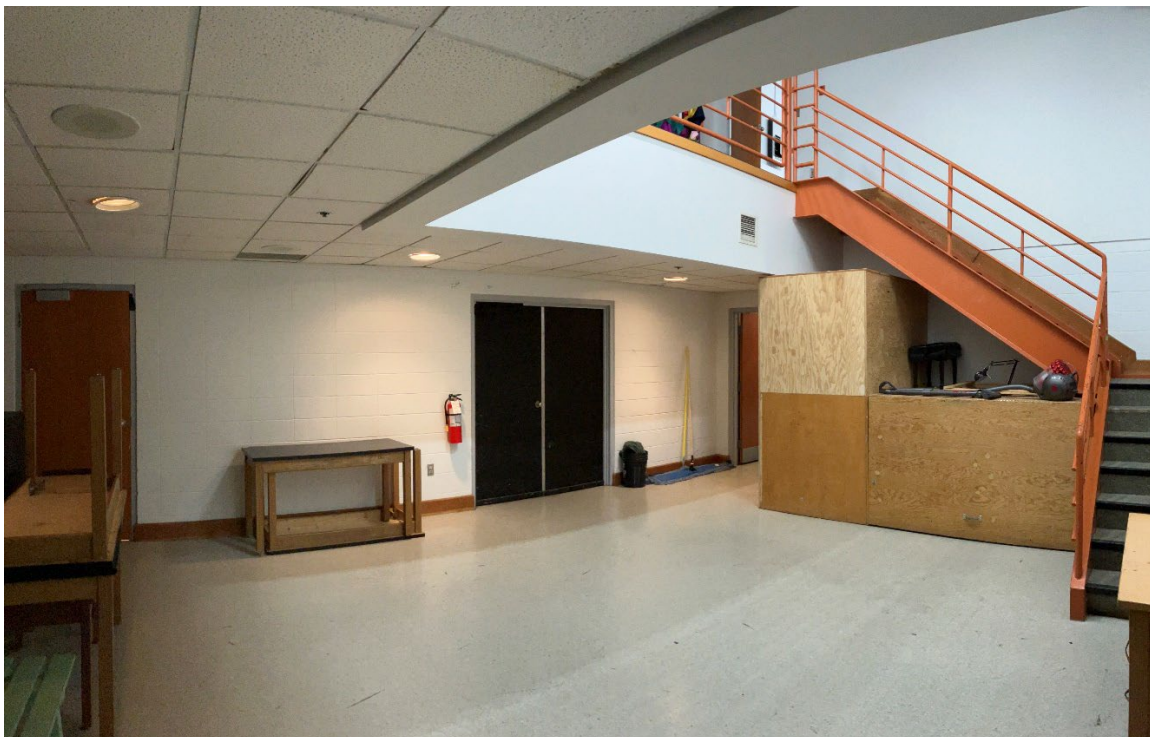
(7M x 5.1M)



Green Room Stage Left

22ft x 20ft

(6.7M x 6M)





Makeup / Dressing Room

17ft x 20ft (5.1M x 6M)

Located on the second story, stage left side

Three sinks and makeup vanity

No bathroom facility

One door enters directly onto the stage left balcony

One door enters to the backstage area balcony



Washrooms

The washrooms are located on the south side of the cafeteria

Parking

North parking lot (Outside of school hours)

South parking lot (Outside of school hours)

Larger vehicles (transporting equipment) can be parked on the east side of the building where load in and load out will take place